

SYSTEM OVERVIEW

The **Infinity POWER Inventory Management** module is designed to be one of the most powerful modules offered. This module is designed to track and account for goods used for resale and used in the business. It also includes capabilities to track and process the manufacturing of items and their possible allocation to various “**projects**” or “**jobs.**” Materials can be transferred directly to a project for “**time and material**” based projects.

KEY INTEGRATION

The **Inventory Management** module is designed to be fully integrated with **Accounts Receivable, Point of Sale, General Ledger, Accounts Payable, Purchase Order Entry, Sales Order Entry** and **Job Cost Main Module**. All transactions involving an inventory item processed through any of these modules are immediately reflected.

INTERNET INTEGRATION

One of the true strengths of **Infinity POWER** is its seamless integration with the **Infinity COMMERCE** programs designed to facilitate on-line processing over the Internet. To further this capability, **Inventory Management** contains several data fields designed for on-line processing of information for Electronic Commerce.

Fields such as **Item Category** make it easy to classify which items will be made available to the Web. A firm may not want to show the whole world its complicated inventory files, just the items it wants to sell or display over the Web.

Likewise, when it chooses those items for use on the Web, fields such as **Graphics Filename, Text Filename, Audio Filename** and **Video Filename** allow for the storing of key file names that can be used during the dynamic generation of Web Pages in products such as **DP/STORE**.

The **Internet** provides a tremendous opportunity to display a wide range of information including part numbers, descriptions, pricing and much more.

However, being able to display pictures and detailed product specifications while playing video and audio files about each product takes the power of the system to a whole new level. Data Pro's **Infinity COMMERCE** is designed to enable all **Infinity POWER** modules for integration to the Web. **Inventory Management** is the key module where it all starts for any firm looking to conduct sales of products on the Internet or their own Point of Sale.

CUSTOM PRICE PLANS

Each inventory item carries up to ten (10) standard price levels. A sophisticated matrix of pricing calculations may be defined.

This includes retail down, cost plus, fixed pricing and quantity break calculations. These levels may then be assigned to specific customers for automatic price calculations during all invoicing options.

The **Inventory Management** module also provides an advanced “**custom**” pricing feature that allows for contract pricing. An option is available to create special “**price plans**” and assign unique items with customized pricing inclusive of multiple units of measure per price plan.

The “**customized pricing**” may be as simple as a weekend special sale where all customers get an extra **10%** off each purchase. However, it may be much more complex. “**Price Plans**” can be quantity based, time based, product category based and much more. These plans may then be assigned to specific customers for automatic pricing calculations as invoicing options are performed.

BARCODING

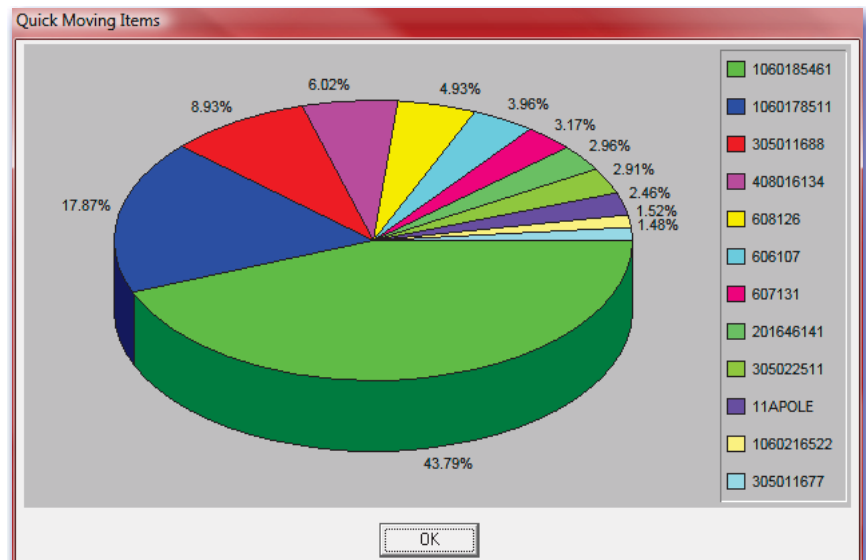
All **Infinity POWER** modules are designed to allow for “**Bar Code Scanning.**” The **Inventory Management** module provides the ability to print bar code labels for items and bins to streamline data entry processing.

This is typically in a **3 of 9** bar code format since the system allows for both alpha and numeric characters within the part number itself.

Reports

- ♦ Sales & Purchases Report
- ♦ Bill of Materials Reports
- ♦ Production Trends Report
- ♦ Price Plan Listing
- ♦ Projected Material Usage Report
- ♦ Components Used Report
- ♦ “**Where Used**” Report
- ♦ Detailed Transactions Report
- ♦ Profit Summary Report
- ♦ Suggested Order
- ♦ Overstock Reports
- ♦ Quantity Report
- ♦ Turnover Trend Report
- ♦ Quick Moving Items Report
- ♦ Slow Moving Items Report
- ♦ Inventory Shrinkage Report
- ♦ Ranking by Gross Profit Report
- ♦ Ranking by Cost Report
- ♦ Inventory Value Summary
- ♦ Price Lists (*Several Options Available*)
- ♦ Price, Bin and Bar Code Labels
- ♦ Barcode Master Sheet
- ♦ Count Sheets
- ♦ Inventory Listing
- ♦ Inventory Detail Report
- ♦ Cost Layer Report

Overview continued on next page



JOB SHOP MANUFACTURING

In figuring out what inventory items cost, the **Inventory Management** module excels. Setting up a project in the **Job Cost Main Module** allows labor costs to be extracted from **Payroll**, purchases to be allocated from **Accounts Payable** and **Inventory Items** to be transferred to the project(s).

This requires the installation of the **Job Cost Main Module**. Machinery charges and overhead are posted directly in the **Job Cost Main Module**. This provides the capability to track every aspect of cost allocation in the manufacturing of an item, a batch of items or any other combination.

Module Overview

Continued

MODULE OVERVIEW

STANDARD MANUFACTURING

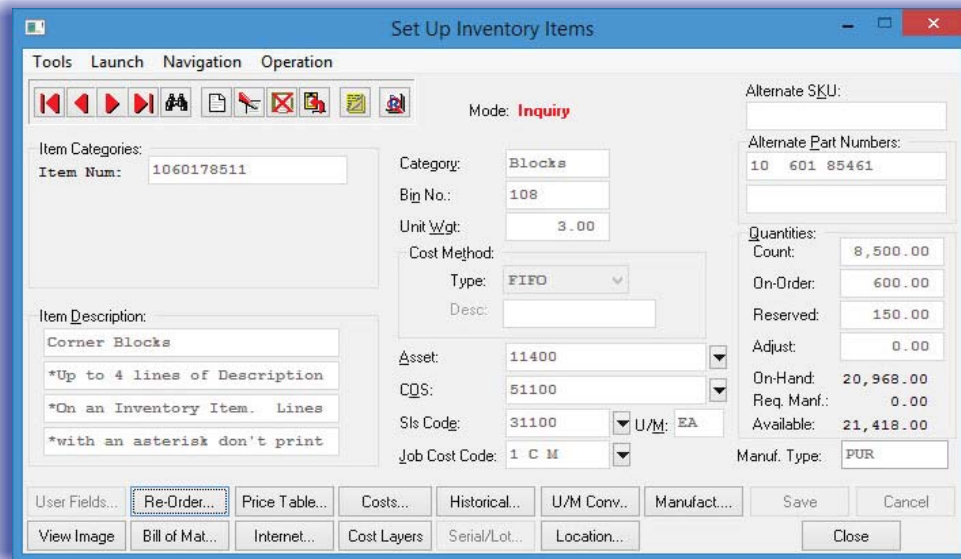
The integration with the **Job Cost Main Module** and its full manufacturing tracking capabilities means that the **Infinity POWER Inventory Management** module can be used to handle both standard and customized manufacturing requirements. The standard manufacturing capabilities come from the ability to define a bill of material for both finished goods and sub-assemblies. With a predefined **"Bill of Material,"** all appropriate raw materials and sub-assemblies are automatically reduced at the time new finished goods are produced. The true costs of the items used in production are calculated as the cost of producing each item. The key is that the costs and definitions of what it takes to manufacture an item are known in advance!

TRANSFER "TO/FROM" PROJECTS

The keys to this process are the options that allow inventory items to be **"transferred to and from"** a project. By providing the ability to **"Transfer To"** a project, inventory items (**raw materials or standard manufactured items**) can be moved from inventory and **"costed"** to the project. This automatically relieves the inventory valuation and increases work-in-process (**WIP**). The option to **"Transfer From"** a project is key to this equation. After tracking the total cost of a production run of items in job costing, the value can then be transferred back to inventory as a specific part number. Left over materials can be transferred back into stock.

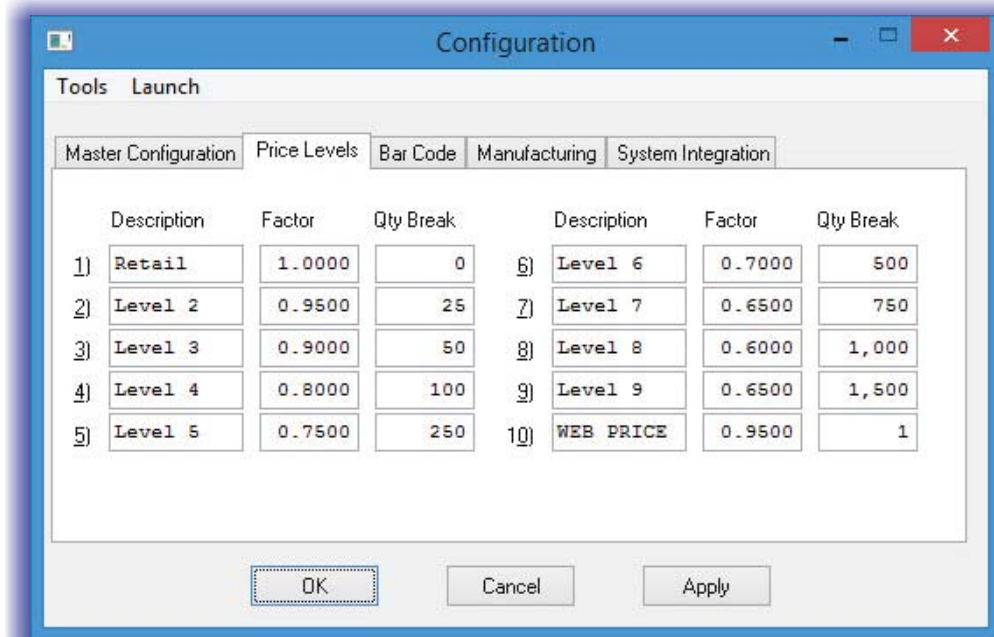
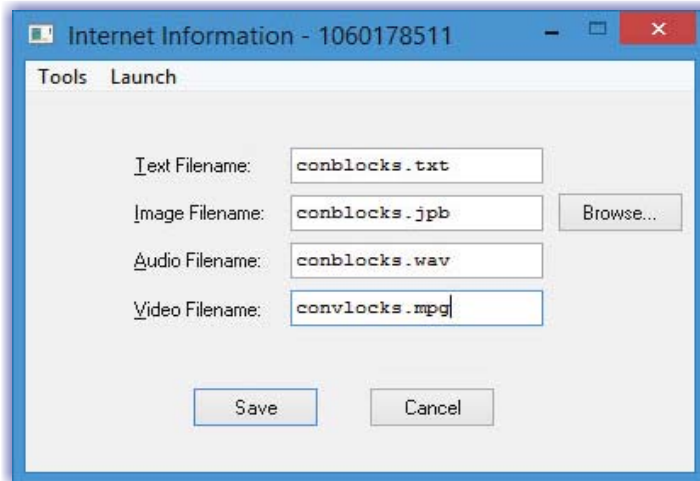
TRUE COST CALCULATIONS

By utilizing this feature, when an item is transferred from a project to the inventory module, it is transferred at the cost associated to the project. This means that all labor, materials, services and other costs required to custom manufacture an item or batch of items is now truly reflected as the cost of the new inventory items being placed into stock. Once this occurs, these customized items are now treated by the system just like any other inventory item.



Their quantities on-hand are increased by the quantity transferred. They are now available for resale or use in the production of yet another inventory item or customized project.

As a standard inventory stock item, the number of possibilities are virtually unlimited. Just like other inventory items, they are now available for use with **On-Line Item Inquiries** as well as available for use with any of the integrated billing modules such as **Accounts Payable, Purchase Order Entry, Accounts Receivable, Point of Sale, DP/STORE, DP/SCAN, Sales Order Entry** and the **DP/Dash Board**.



Module Features

- ◆ Complete Inventory Control and Management System.
- ◆ Up to Twenty (20) Character Part Numbers (*alpha/numeric*).
- ◆ Allows Full Integration to Job Cost Main Module for Project Transfers to/from Jobs/Projects.
- ◆ Includes full Bill of Materials Processing for each Inventory Item for complete Manufacturing Processing.
- ◆ Assign up to **1000** items per Sub-Assembly.
- ◆ **“Custom Manufacturing”** through Job Cost Main Module or Bill of Material Processing. Works in conjunction for both methods of processing simultaneously.
- ◆ Allows Manufacturing of Assemblies that may be transferred to a Project.
- ◆ Allows Customized Manufactured items on a Project to be transferred to Inventory as Finished Goods for resale.
- ◆ Eight (8) Costing methods supported:
 - ◆ **LIFO** (Last In First Out)
 - ◆ **FIFO** (First In First Out)
 - ◆ **Average Cost**
 - ◆ **Latest Cost**
 - ◆ **Standard Cost**
 - ◆ **Serial #**
 - ◆ **Lot #**
 - ◆ **Fixed Overhead**
- ◆ Supports Bar Code Readers for Data Input and Prints Bar Code Labels.
- ◆ Allows Inventory Adjustments.
- ◆ Allows Complete Detailed Analysis of Materials used on each Project.
- ◆ Processes Inventory Control of Raw Materials, Assemblies and Sub-Assemblies.
- ◆ Reduces Component Inventory at time of Manufacture.
- ◆ Provides Future Manufacturing Cost Projections.
- ◆ Handles the creation of **“By-Products”** at the time of Manufacture.
- ◆ MRP Calculations based on Current Sales, Order Commitments and Projections.
- ◆ Custom **“Price Plan”** Options for Contract Pricing.
- ◆ **“Price Plans”** also have the capability of using multiple units of measure in each specific price plan.
- ◆ Tracks up to five (5) Decimal Places by Item for Unit Cost, Unit Price or Quantities.
- ◆ Allows **“Importing”** of Inventory Items for easy conversion from other systems.
- ◆ Allows **“Importing”** of Transactions.
- ◆ Allows **“Importing”** of Pricing Tables.
- ◆ Allows **“Importing”** of Physical Counts.
- ◆ Multi-Location Tracking and Reporting on all Reports.
- ◆ Allows Quick Price Table Changes for all Items or a Range of Items.
- ◆ Ten (10) Standard Price Levels with Factors and Quantity Breaks per Item.
- ◆ User-Definable Descriptions of Price Levels.
- ◆ Tracks Two Alternative Part Numbers.
- ◆ Transactions for items transferred to or from a Job are updated on the Job by using the Inventory Item Number as the Job Cost transaction description.
- ◆ Unlimited number of Inventory Items.
- ◆ Unlimited number of Transactions.
- ◆ Pricing Options available by Factors.
- ◆ Allows Input of Returns into the System.

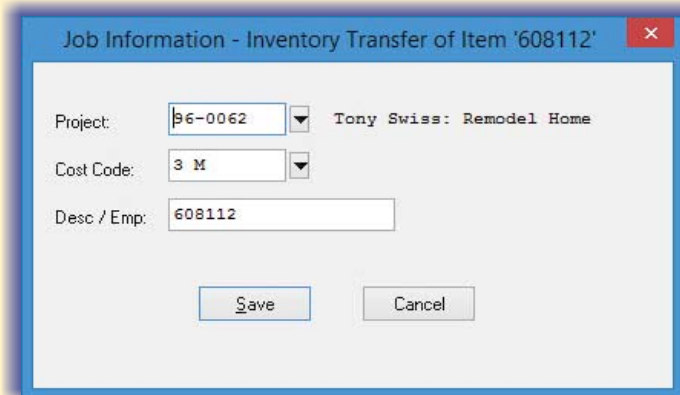
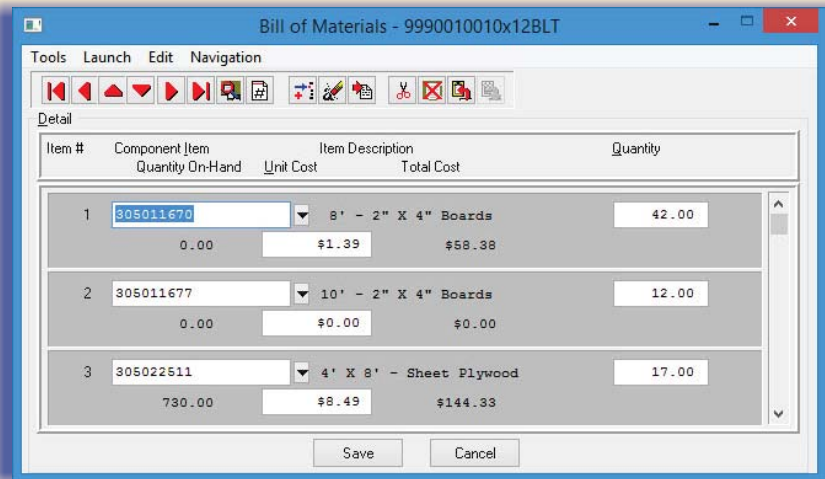
- ◆ On-Line Add an Inventory Item (*Quick Add, Change, Inquiry*).
- ◆ On-Line Inventory Item Inquiry (*Shows Pricing, All Quantities, Costs*).
- ◆ User-Definable Part Number Lengths and Descriptions.
- ◆ Four Lines of Description per Item Number.
- ◆ Sorts by Part Number, Description, Bin Number, User Defined Field with Multi-Layer Search Capability and User Defined Indexes.
- ◆ Provides option to transfer Items from one Item Number to another at cost.
- ◆ Tracks Two Vendors and Vendor Part Numbers per Item.
- ◆ Material Requirements Planning and Reporting.
- ◆ Updates General Ledger Automatically with Sales, Cost of Sales and Shrinkage.

Module Features

Continued

MODULE OVERVIEW

- Supports Commitment of Inventory Sold, but not Shipped.
- Tracks Unit Weight for Freight Calculations in Sales Order Entry.
- Unit of Measure defined by Item.
- Tracks Minimums to Stock/Order by Item.
- Tracks Maximum to Stock by Item.
- **“Update Physical Count”** allows users to automatically **“receive”** overages at last cost of the item.
- System wide implementation of **“Serialized Inventory”** and **“Lot # Tracking.”**
- Costing Methods are tracked on an **“item by item”** basis.
- Unit of Measure Conversion feature allows for ten (10) unique factor setups per item.
- Allows for fractional **“unit of measure”** factors.
- Lot Number feature allows for Size, Style and Color tracking on items.
- Multi-Location Inventory implementation provides the ability to transfer inventory easily from physical location to physical location with all applicable accounting requirements.
- **F7** Inquiry for Serial & Lot Numbers by Item.
- **F8** Inquiry for Multi-Location Quantities by Item.
- Screen Out certain price levels by item from inquires provides protection for sensitive pricing information.
- Inventory Transaction Files include both the Vendor's and Customer's invoice and Vendor/Customer Numbers to easily determine where each item was purchased and to whom it was sold.
- Specialized fields for Internet integration include **“Item Category,” “Textfile,” “Imagefile,” “Videofile,”** and **“Audiofile.”**
- **Windows GUI** version includes **“browse”** button for finding files on local hard drives or network drives. Ideal for use with **Infinity COMMERCE** implementations.
- Physical Counts and Updates to Inventory can be done using both **“Lot”** and **“Serial Numbers.”**
- Last cost on Inventory Item for use on **“Return Authorizations.”**
- Formatted **(.JPG or .BMP)** attached to each item for review.
- Unit of Measure added to the Price Label printing option.



SYSTEM INTEGRATION (System Administrator Required)

- Accounts Receivable
- Accounts Payable
- General Ledger
- Purchase Order Entry
- Sales Order Entry
- Point of Sale
- Job Cost Main Module
- DP/DashBoard
- DP/STORE
- DP/SCAN

GRAPHS*

- Sales, COS & Purchases by Item
- Quick Moving Items Ranking
- Slow Moving Items Ranking
- Ranking by Gross Profit
- Ranking by Cost

