

## SYSTEM OVERVIEW

The **Report Writer (Run Time)** module is a program that allows the user to “print” customized reports from a pre-existing database (*collection of data files*).

The **Run Time** module does not allow for the creation or modification of report models. It allows you to print custom reports that were created using the standard **Infinity POWER Report Writer** module (*Part #280*). This report printing capability allows you to use any of the standard **Infinity POWER** custom report models included with this package or to acquire new report models from your Consultant or directly from **Data Pro Accounting Software**.

As a special feature, this module includes a “report import” option that allows you to use reports from other users or to “download” new reports directly from **Infinity POWER**.

In summary, the **Report Writer (Run-Time)** module gives you the ability to print important custom reports without requiring the execution of all the steps necessary for setting up these reports. In this way, you can utilize the skills of computer specialists (*for creating your reports*) and spend your time more efficiently and effectively with running your business.

## SYSTEM INTEGRATION

The **Report Writer (Run-Time)** module integrates with all **Infinity POWER** modules. All reports may retrieve information from up to ten different files and each file could be from a different accounting module. No additional steps are required to create integration with any other module. This is handled automatically by the system.

## STATISTICS

This is a highly flexible feature that allows users to enter a “variable” piece of information at the time the report is being run so that it is included in the report. For instance, if a report for a customer aging is being run and a special finance charge should be included where the rate could change for any reason, the rate could be set up in the report model as a “**statistic**.”

Therefore, before the report is run the user can go in and enter the current rate as a value or “**statistic**” as shown at right so that it is factored into the report's calculations.

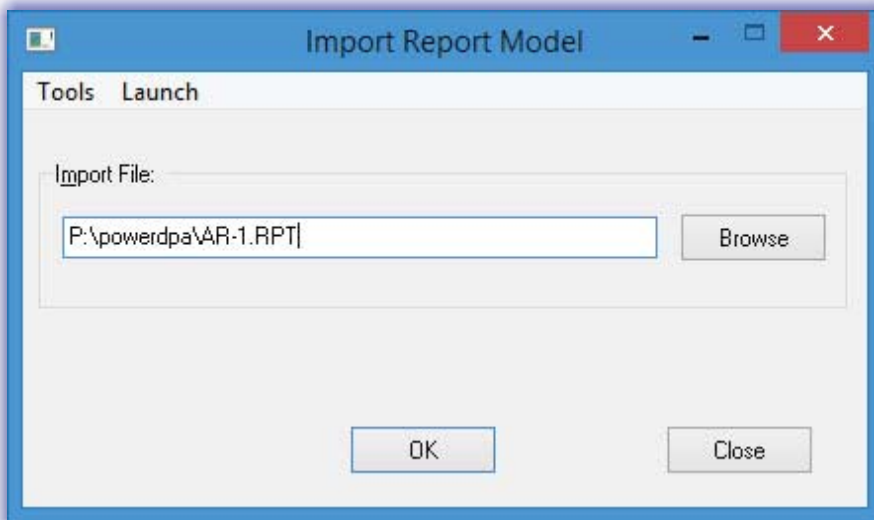
## PASSWORD CONTROLS

Report models may be set up when designed to prompt for “passwords” so that only users with access can print the information permitted by the various reports created for each company.

This is an important aspect of using this module. Compared to allowing all users access to all of the company's data files through third party applications where no controls to a company's data can be set, the **Report Writer Run-Time** module allows management to control who sees only the information management wants to disclose.

Control to important company information can be exercised by limiting the number of reports individuals can access and who accesses them.

*Integrates with all Infinity POWER Modules*



## Module Features

- Allows printing of customized reports created by the full-blown **Infinity POWER Report Writer** module accessing data from an **Infinity POWER** accounting database.
- Standard **Infinity POWER** custom report models included.
- Allows for “Importing” custom reports from other systems where custom “report models” were generated.
- The system will allow users to enter “statistics” for specific reporting features.
- Easy to use. No programming experience required.
- Ideal for use in remote offices or where a Dealer may be generating the reports on behalf of the customer. Otherwise, the full-blown **Report Writer** module should be used for creating and printing reports.

