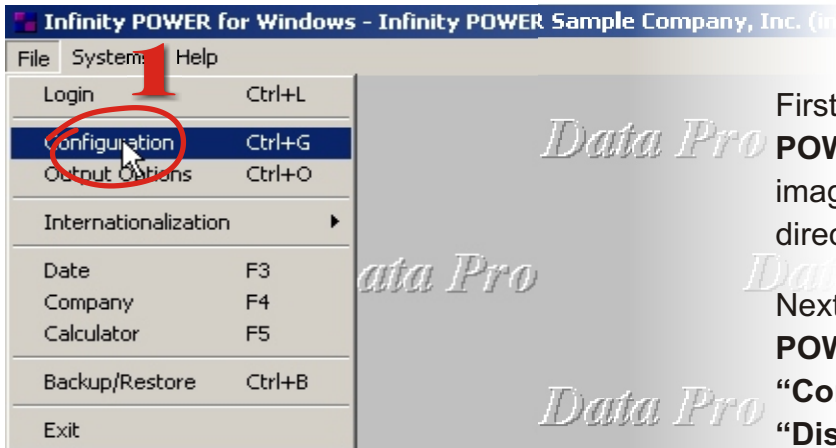
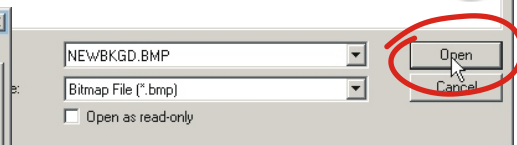
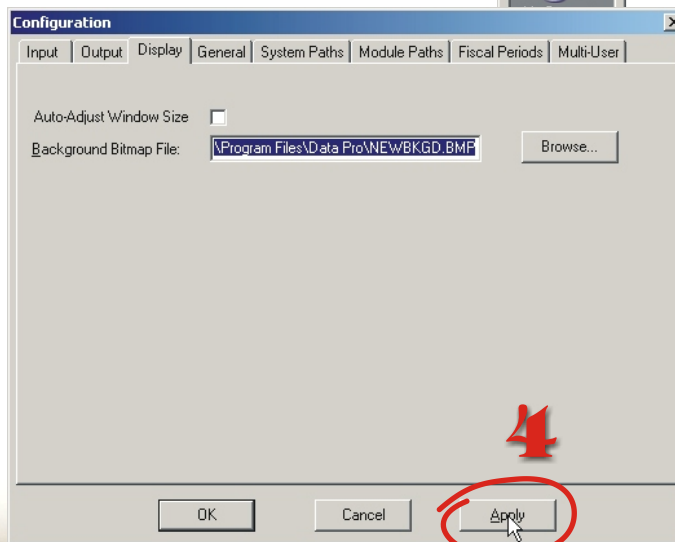
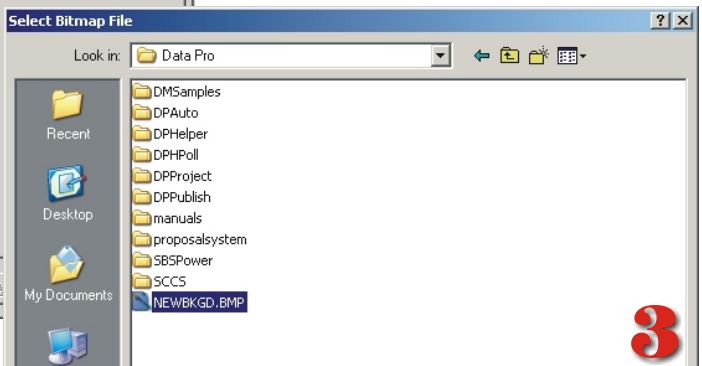
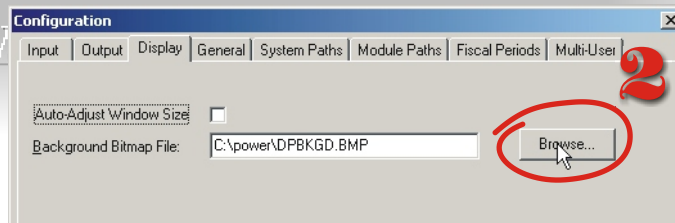


Wallpaper



First, save your new **Infinity POWER Custom Wallpaper** image into an accessible directory.

Next, from within **Infinity POWER**, select “**File**”, then “**Configuration.**” Select the “**Display**” tab and click on the “**Browse**” button to find your new **Wallpaper** image. Once you select your new bitmap image, click the “**Open**” button.



Finally, click on the “**Apply**” button. That’s it! Your new **Wallpaper** will immediately be displayed.